

Standard Range (10"WC to 100 PSID) Wet/Wet Differential Pressure Transmitter



377 (10"WC to 100 PSID) WET/WET DIFFERENTIAL PRESSURE TRANSMITTER

Features

- Single Diaphragm for Precision
- Fast response
- External Zero & Span Adjustments
- 1,000 PSI Line Pressure (Standard)
- 3,000 PSI Line Pressure (Optional)
- Shunt calibration circuit

Applications

- Leak testing
- Flow measurement
- Engine test stands
- Research
- High speed testing
- Unidirectional or Bidirectional

www.viatran.com

PERFORMANCE

Full Scale Pressure Ranges (FSPR)	0 -10, 20, 100, 300" WC 0-15, 50, 100 PSI
Combined Accuracy (Non-Linearity (BFSL), Hysteresis & Repeatability)	$\leq \pm 0.20\%$ RSS
Full Scale Output (FSO)	16.00 mA $\pm 1\%$ FSO @ 70°F
Resolution	Infinite
Zero Shift w/Line Pressure (%FSO/1000 PSI)	$\leq \pm 2\%$
Zero Shift After 1000 PSI Overload	
0-10" thru 0-50" WC	Single Side $\leq \pm 0.5\%$ FSO Alternate Sides $\leq \pm 0.5\%$ FSO
$\geq 0-100"$ WC	Single Side $\leq \pm 0.2\%$ FSO Alternate Sides $\leq \pm 0.5\%$ FSO
Compensated Temperature Range	70°F to +170°F (21°C to 77°C)
Operating Temperature Range	0°F to +185°F (-20°C to 85°C)
Storage Temperature Range	-40°F to +185°F (-40°C to 85°C)
Thermal Effect on Zero	$\leq 2.0\%$ FSO per 100°F
Thermal Effect on Span	$\leq 2.0\%$ FSO per 100°F

ELECTRICAL

Supply Voltage	9-30 VDC
Power Supply Regulation	$\pm 0.02\%$ FSO per volt (Typical)
Output Signal	4-20 mA
Load Impedance	1000 ohms maximum @ 30 VDC decreasing linearly to 0 ohms @ 9 VDC
Zero Adjustment	$\pm 5\%$ FSO min./ $\pm 50\%$ FSO max.
Span Adjustment	$\pm 5\%$ FSO min./ $\pm 50\%$ FSO max.
Range Calibration Signal	80% FSO $\pm 10\%$ by shorting pins C&D
Calibration Signal Accuracy	$\leq \pm 1.0\%$
Circuit Protection	Reverse polarity protected
Insulation Resistance	< 5 nS to case ground
Standard Electrical Connection	Mates with 6 pin, Hermetic, Box Mount, Shell Size 10, MIL-C-26482 bendix type connector
Pin Outs	Pin A + Signal / Power Pin B - Signal / Power Pin C Shunt Cal Pin D Shunt Cal Pin E No Connection Pin F No Connection

MODEL 377 Differential Pressure Transmitter



The Value of Viatran to Your Operation

Viatran value is measured in maximum reliability and minimal repair, unlike products that result in less durability and more downtime for replacement. Viatran value is worth your investment for the long run:

♦ PRODUCTS

50 years of proven solutions

♦ TECHNICAL SUPPORT

Expert problem solvers

♦ CUSTOMER SERVICE

Fast, friendly and honest



MECHANICAL

Standard Pressure Port	1/4" NPT Female
Static Pressure	0-10" WC
0-20" WC thru 1000 PSI	1000 PSI (Optional 3000 PSI w/ process flanges)
Proof Pressure	1000 PSI single sided
Burst Pressure	0-10" WC
0-20" WC thru 300 PSI	1150 PSI
0-15 thru 0-100 PSI	1450 PSI
	1850 PSI
Volume Displacement	0.1 mL at FSPR
Pressure Cavity Volume	
Standard Flanges:	0.4 cubic inches
Optional Process Flanges "NB":	1.5 cubic inches
Mounting	May be supported by process piping or by optional mounting bracket.
Response Time	Consult engineering

MATERIALS OF CONSTRUCTION

Wetted Materials	316 stainless steel and Viton O-Ring
Enclosure Material	304 and 316 Stainless Steel
Identification	Laser marked on body of unit
Weight	3.5 lbs. (6.5 lbs. with optional flanges)

OPTIONS

B()	Alternate electrical connector
DG	Improved temperature compensation
DH	Special Range
DK	Special calibration setting
DW	No external adjustments
EA	Special Calibration Run
GE	Buna 'N' O-Rings
NB	Alternate process flanges for increased line pressure rating (3000 PSI)
NF	Fast response time
NH	Customer specific identification
PW	Calibration of Meter w/Viatran unit
Y()	Alternate pressure ports
Z()	Alternate electrical connector

Note: Application of some available options may affect standard performance. Consult Viatran Application Engineers for details.

Information is accurate to the best of Viatran's knowledge. We reserve the right to change specifications at any time. Please contact Viatran for specific order inquiries.

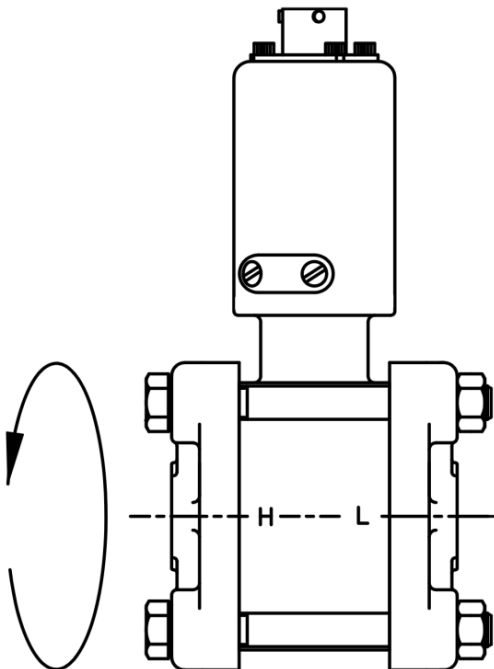
MODEL 377 Solutions custom-fit to your application

MOUNTING



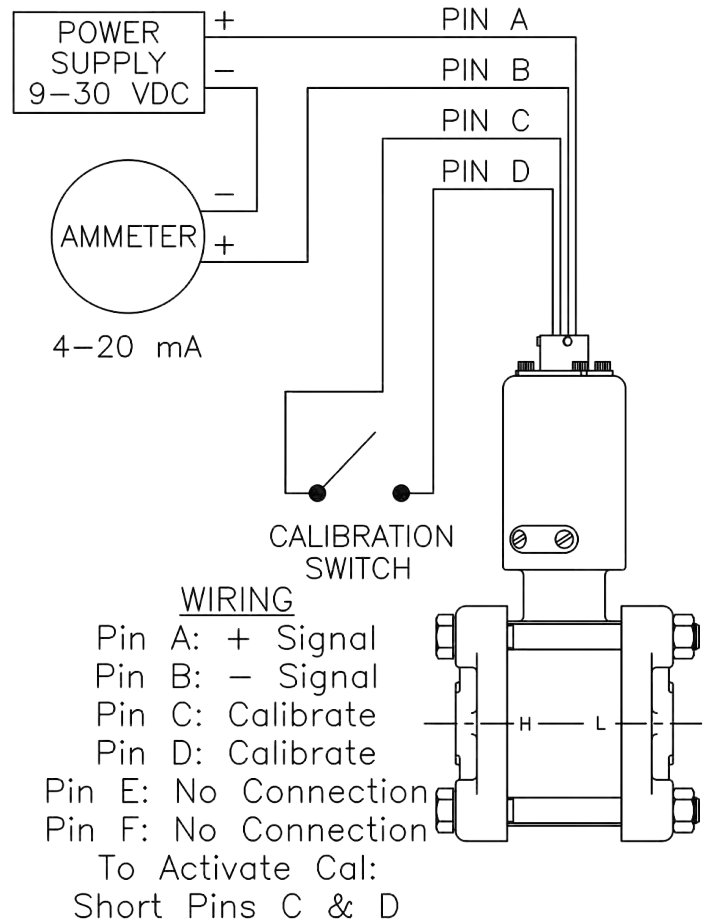
Example of Model 277 mounted in spray booth application.

ORIENTATION



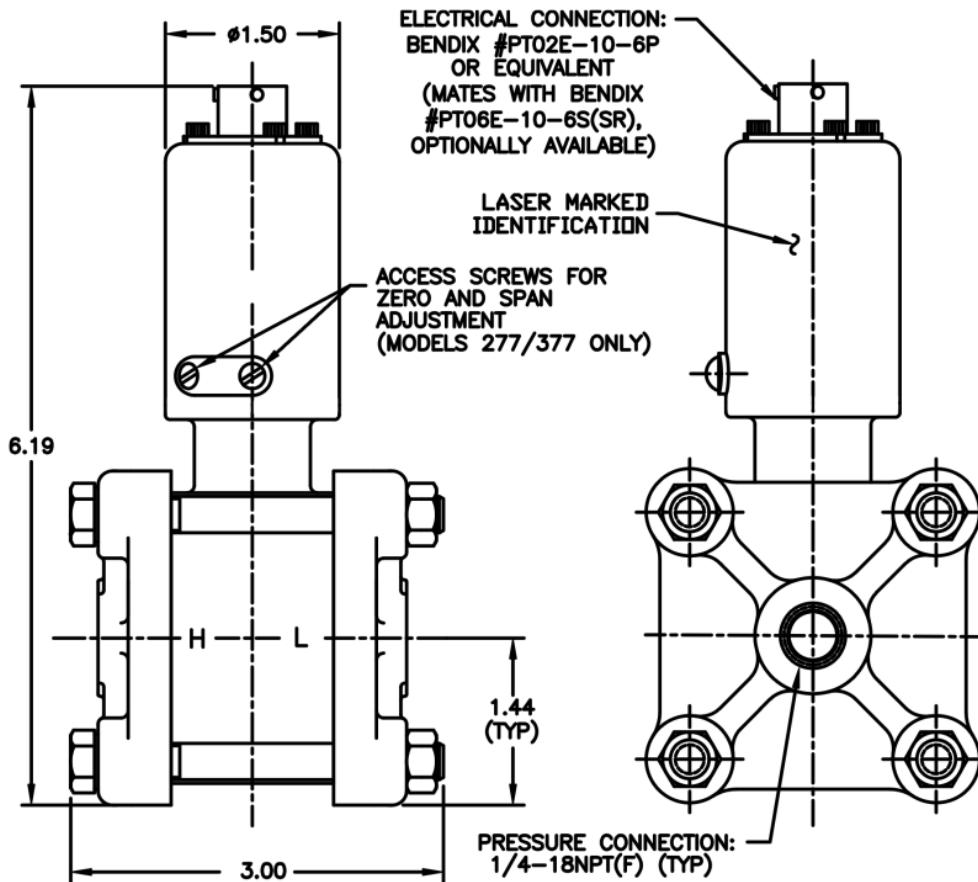
Due to the effects of gravity on the oil fill of the sensor, it's recommended that the product be mounted as shown

WIRING CONNECTIONS



MODEL 377 Differential Pressure Transmitter

DIMENSIONAL DATA



ACCESSORIES

- TBD Mounting Bracket
- TBD Digital Indicator
- TBD Mating Electrical Cable Assembly



38 Forge Parkway, Franklin, MA 02038 USA
International: 1-716-629-3800 | Toll Free: 1-800-688-0030
Fax: 1-716-693-9162 | Email: solutions@viatran.com
Web: www.viatran.com

An ISO 9001:2015 Certified Company
98DS377d